



Standard Operating Procedures

***** Street Rd
Richmond, VA 23219

www.*****.com
Help@*****.com
(555)-555-5555

Xbox Series Controller Disassembly

Document Updates

Date	Name	Changes
03/05/2026	Alex Whitfield	<ul style="list-style-type: none"> Creation of the document
03/06/2026	Alex Whitfield	<ul style="list-style-type: none"> Initial text added
03/07/2026	Alex Whitfield	<ul style="list-style-type: none"> Images added Language clean up Typos fixed
03/08/2026	Alex Whitfield	<ul style="list-style-type: none"> Added additional language to specify where to remove screws from in each step Updated images to have more accurate rumble motor visuals

Xbox Series Controller Disassembly



Overview

This Standard Operating Procedure (SOP) covers how to disassemble an Xbox Series Controller.

i When removing screws, place them in separate containers, so if you decide to reassemble the controller, you know which screws were used for which step.



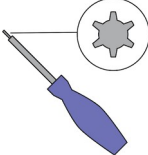
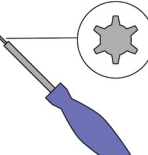


Standard Operating Procedures

***** Street Rd
Richmond, VA 23219

www.*****.com
Help@*****.com
(555)-555-5555

Xbox Series Controller Disassembly

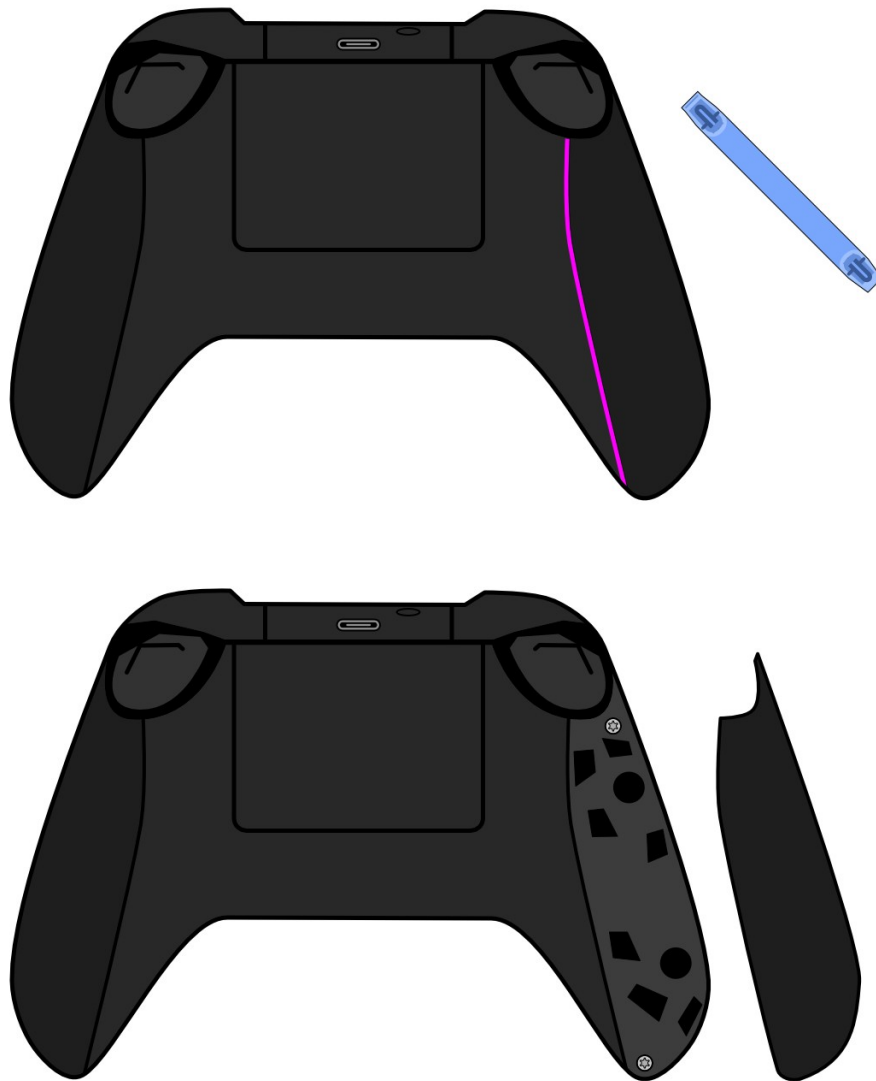
Required Tools

Torx T6 screwdriver	
Torx T8 screwdriver	
Spudger	
Tweezers	

Xbox Series Controller Disassembly

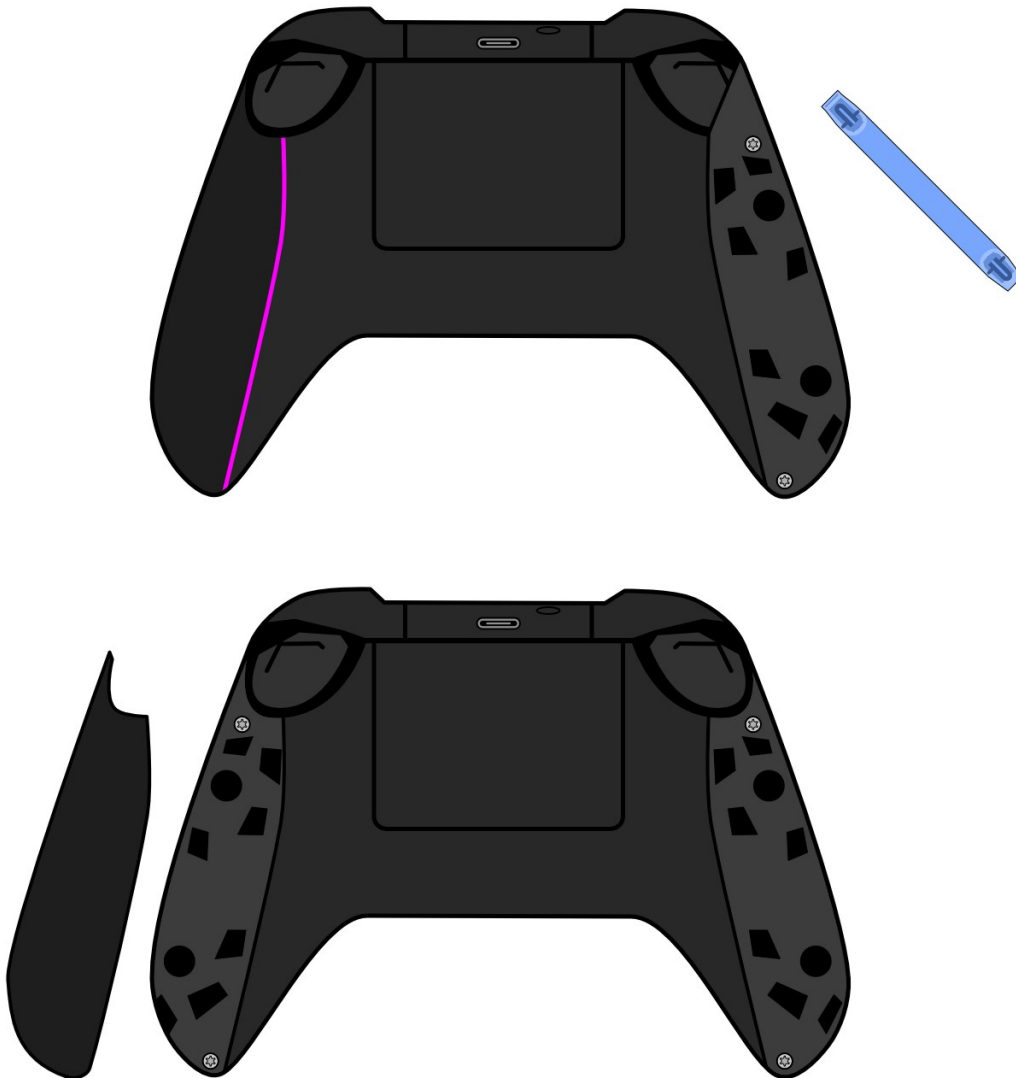
Standard Operating Procedure

- 1) With the **spudger**, insert it between the controller's **left handle panel** and the rest of the controller, moving it along the back until the controller's **left handle panel** pops off.



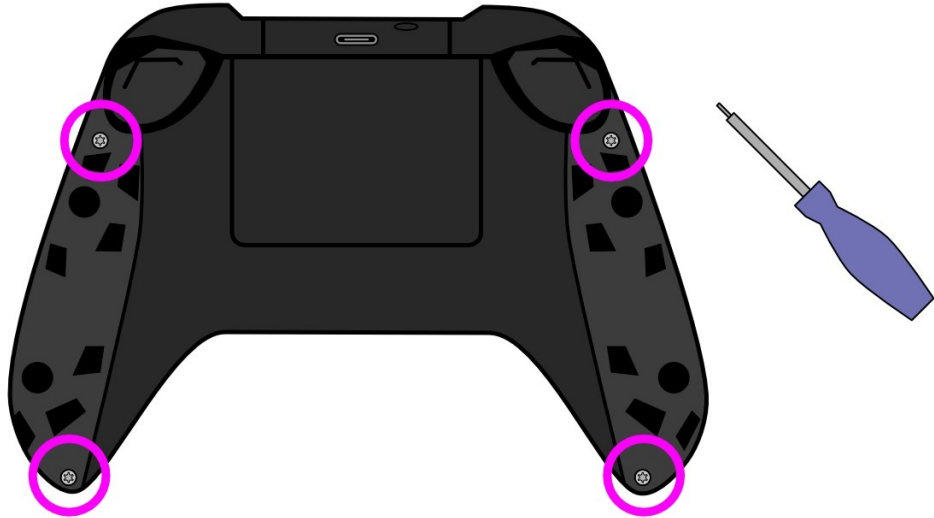
Xbox Series Controller Disassembly

- 2) With the **spudger**, insert it between the controller's **right handle panel** and the rest of the controller, moving it along the back until the controller's **right handle panel** pops off.



Xbox Series Controller Disassembly

3) With the **Torx T8 screwdriver**, remove the four screws from the back of the controller.



4) Remove the **battery cover**.



Xbox Series Controller Disassembly

5) With the **tweezers**, peel back the **sticker** in the **battery case** enough to reveal the screw.

i You can use a hair dryer to warm up the sticker to make it easier to remove



6) With the **Torx T8 screwdriver**, remove the screw from the **battery case**.

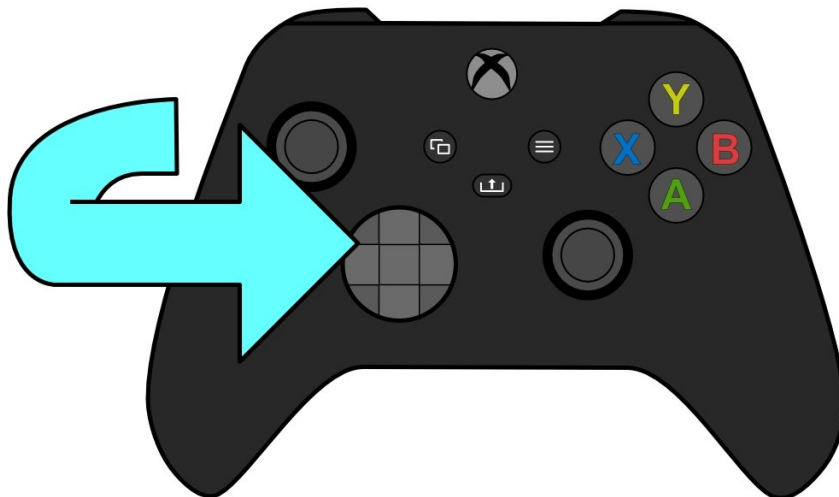


Xbox Series Controller Disassembly

7) Flatten the **sticker** in the **battery case**.



8) Flip the controller to its front.



Xbox Series Controller Disassembly

9) Remove the front panel.



Xbox Series Controller Disassembly

10) Remove the Left Stick and the Right Stick.



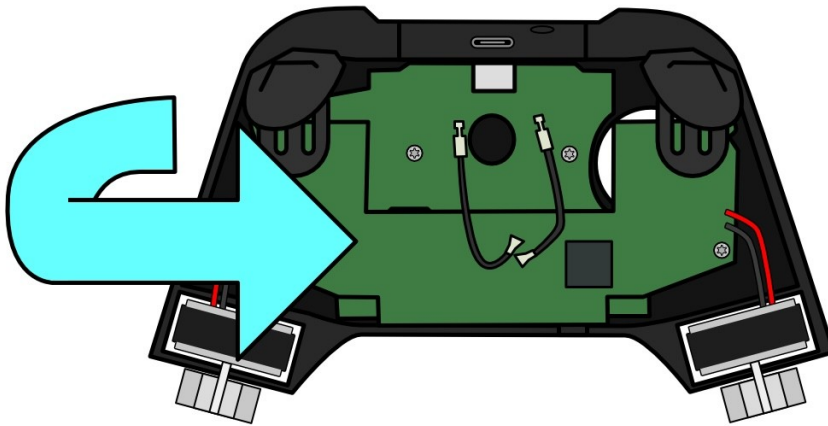
Xbox Series Controller Disassembly

11) Remove the controller from the **back panel**.

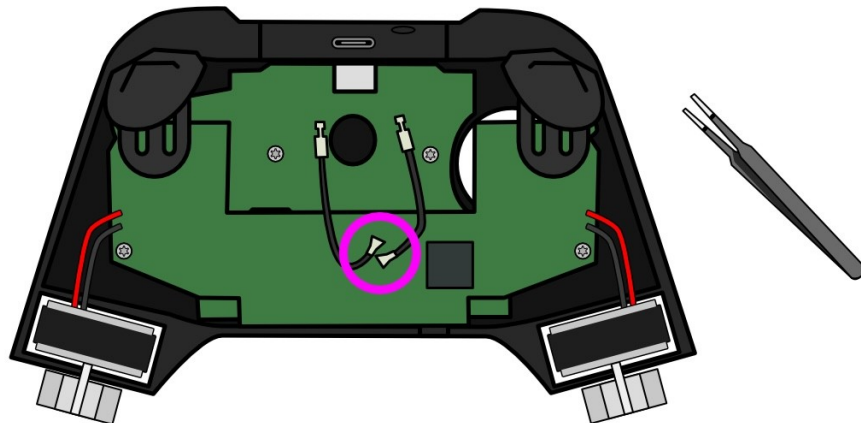


Xbox Series Controller Disassembly

12) Flip the controller to its back.

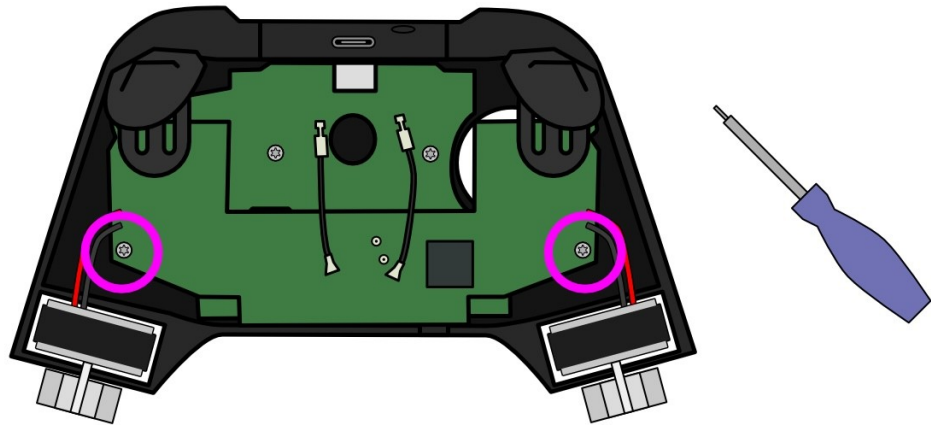


13) With the **tweezers**, disconnect the **antennas**.

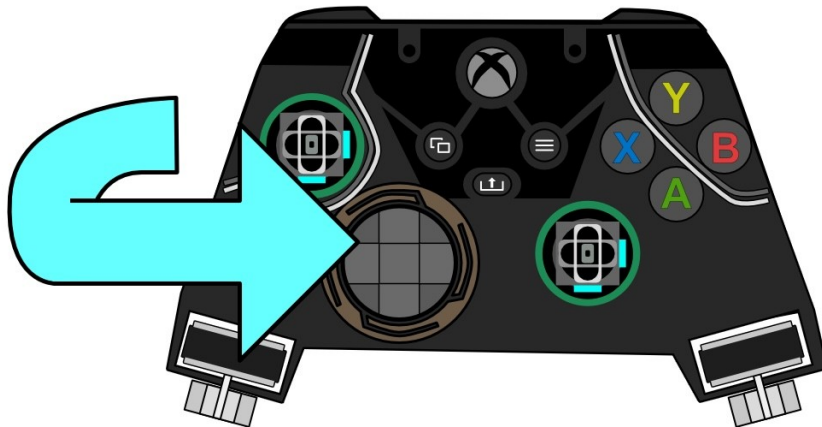


Xbox Series Controller Disassembly

14) With the **Torx T6 screwdriver**, remove the two screws from the **top board**.

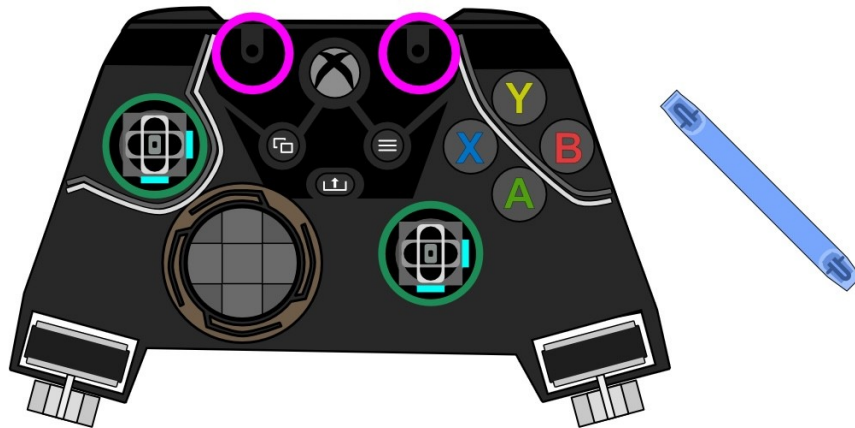


15) Flip the controller to its front.



Xbox Series Controller Disassembly

16) With the **spudger**, pop the **center part**.



17) Remove the **center part**.

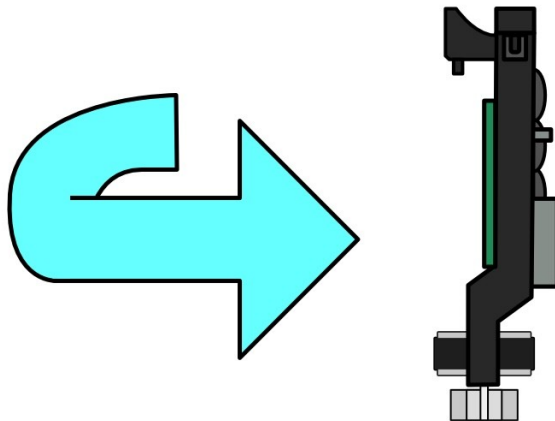


Xbox Series Controller Disassembly

18) Remove the sync button.

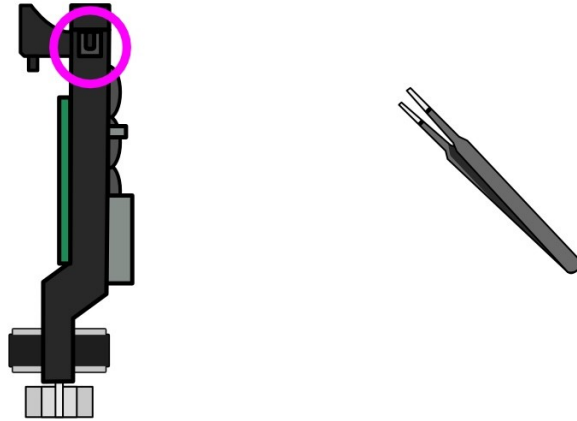


19) Flip the controller to its left side.

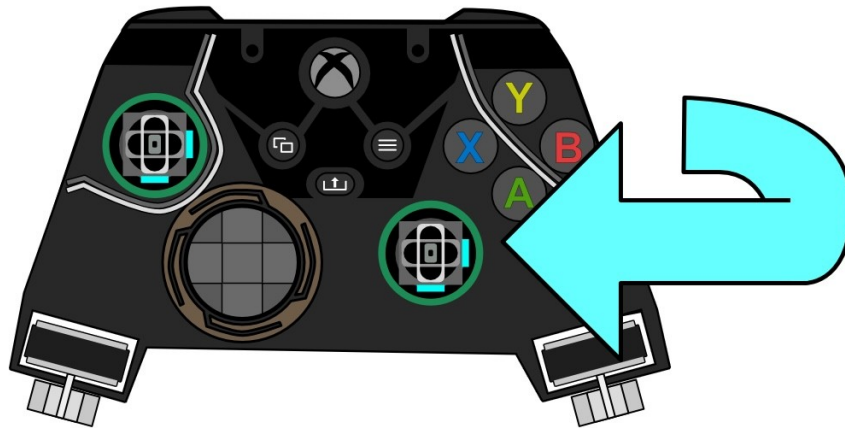


Xbox Series Controller Disassembly

20) With the **tweezers** disconnect the **Left Bumper (LB)** from the controller.



21) Flip the controller to its front.

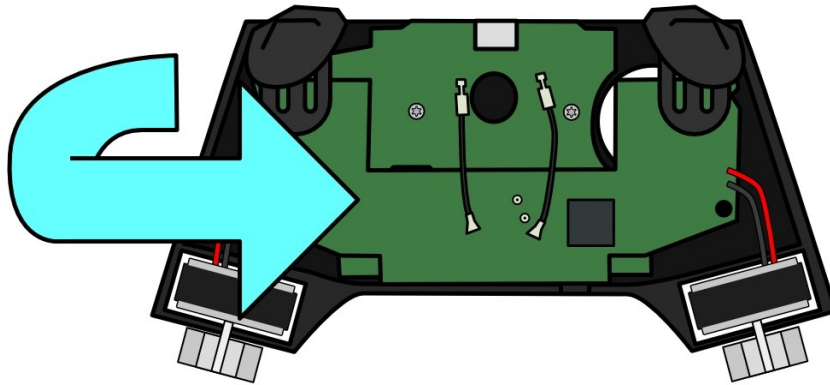


Xbox Series Controller Disassembly

22) Remove the **top part** which includes the **Left Bumper (LB)** and **Right Bumper (RB)**.

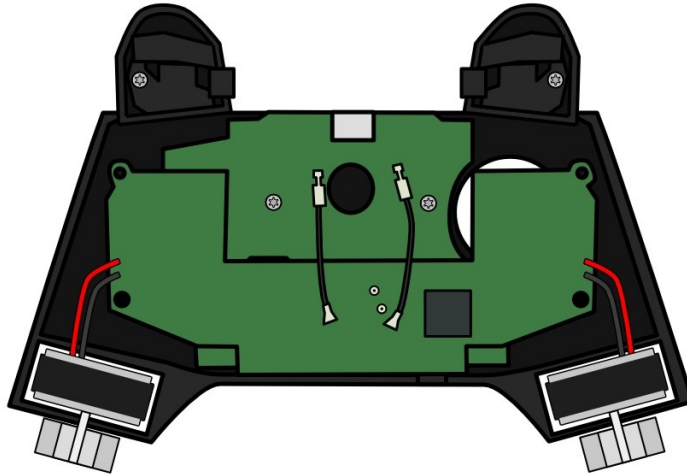


23) Flip the controller to its back.

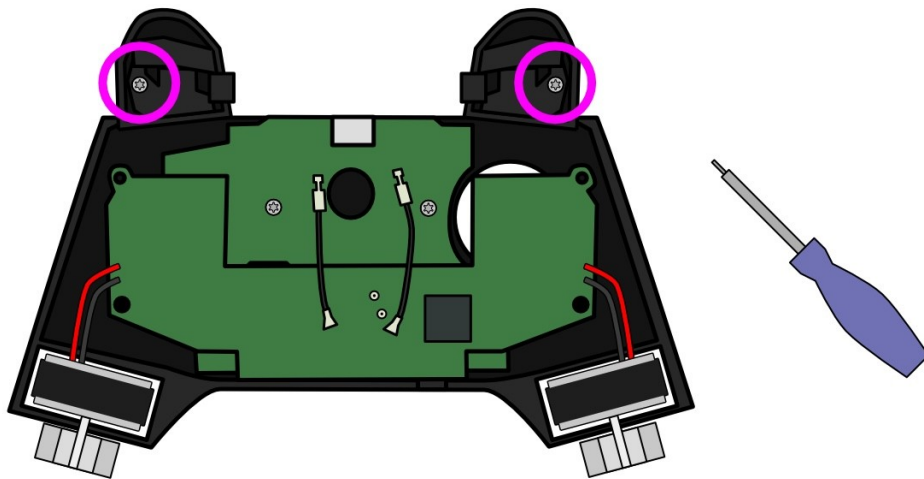


Xbox Series Controller Disassembly

24) Flip the **Triggers** up.

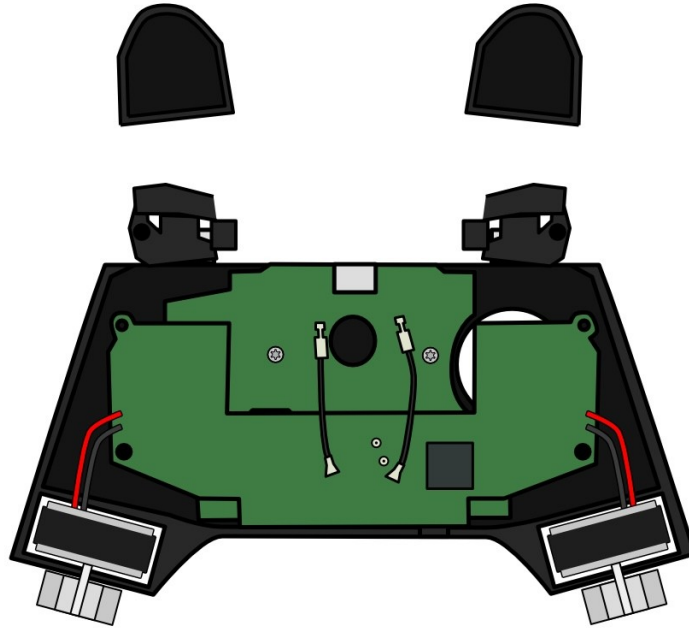


25) With the **Torx T6 screwdriver**, remove the two screws underneath the **Triggers**.

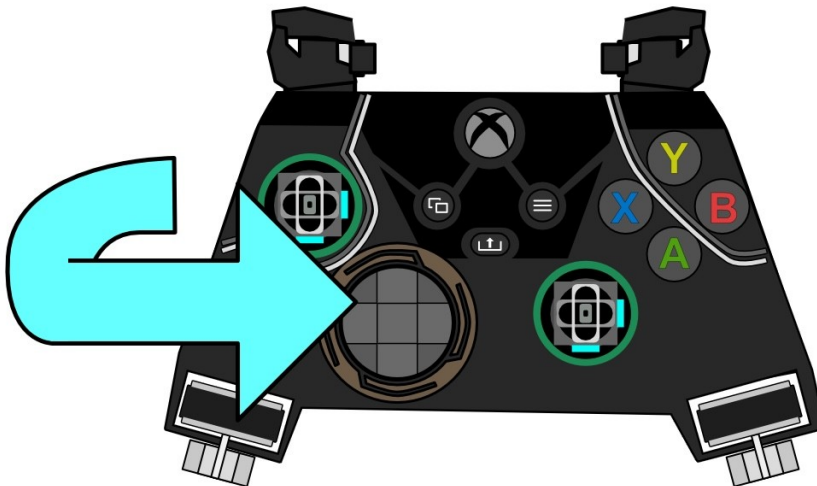


Xbox Series Controller Disassembly

26) Remove the **Trigger covers**.

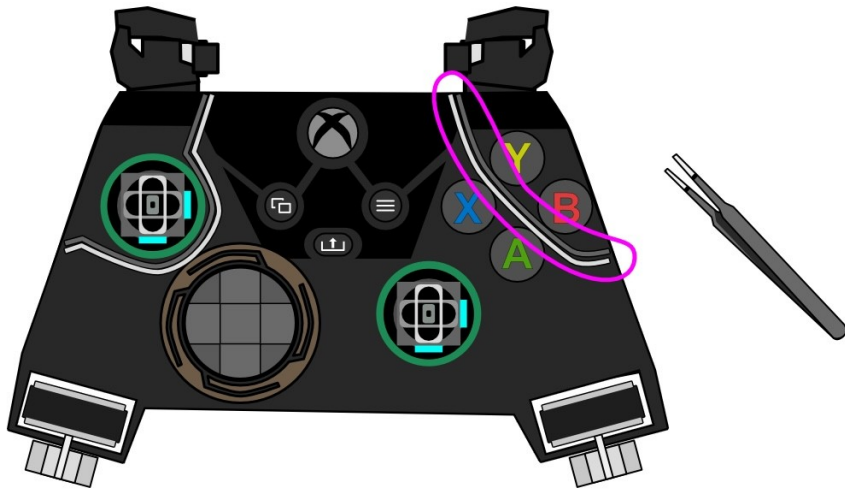


27) Flip the controller to its front.

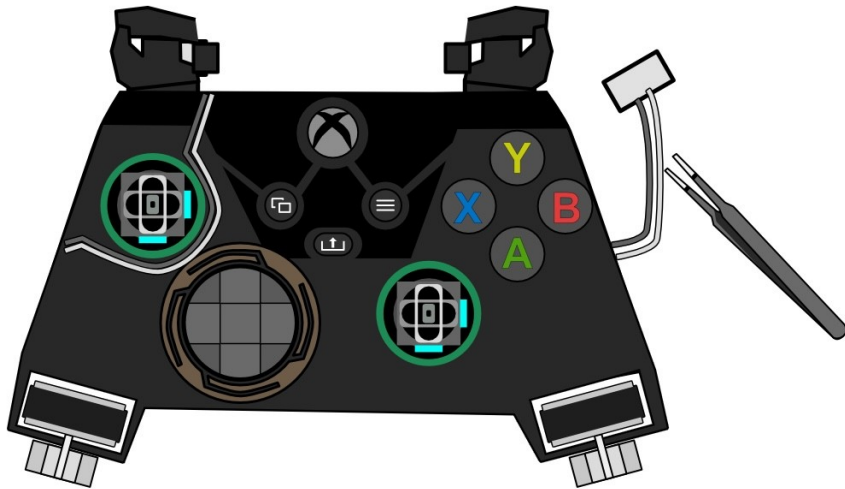


Xbox Series Controller Disassembly

28) With the **tweezers**, free the **Right Trigger motor cables** that wrap around the **Face Buttons**.

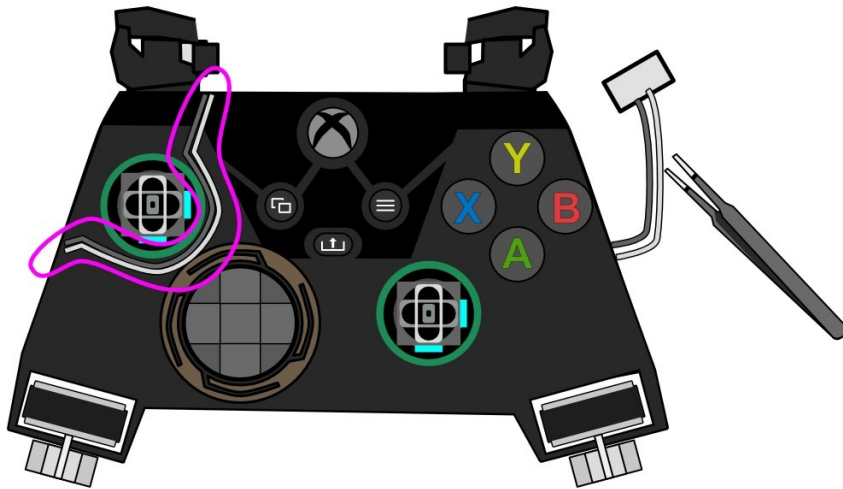


29) With the **tweezers**, remove the **Right Trigger motor**.

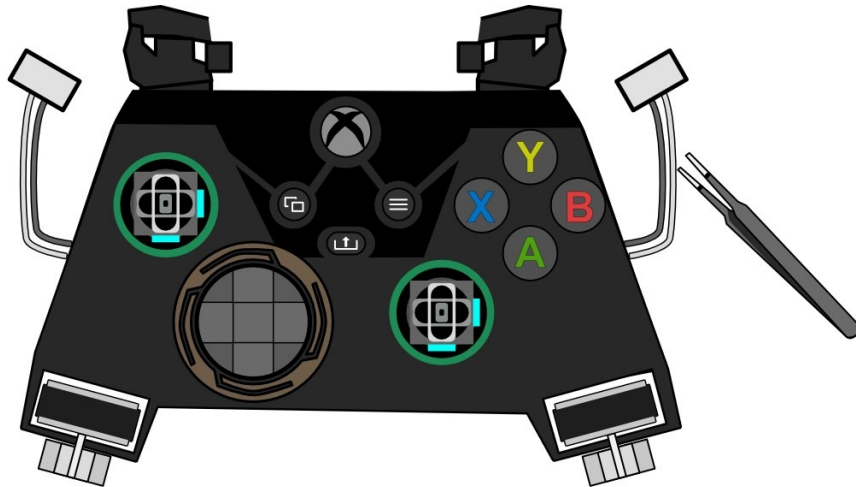


Xbox Series Controller Disassembly

30) With the **tweezers**, free the **Left Trigger motor cables** that wrap around and under the **metal ring** around the **Dpad**.

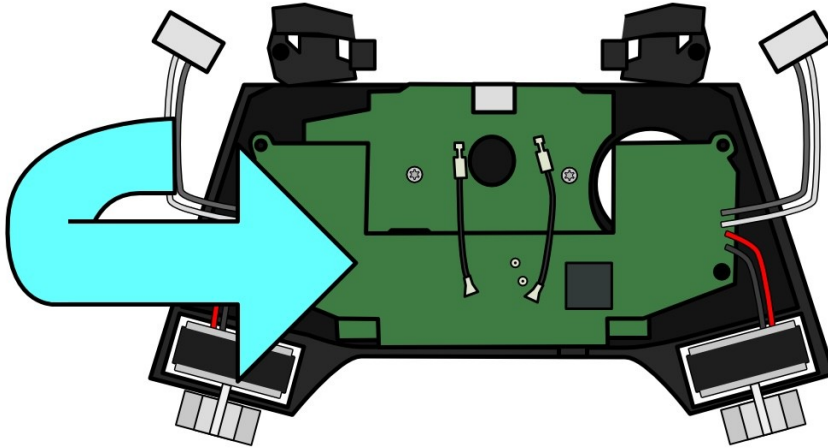


31) With the **tweezers**, remove the **Left Trigger motor**.

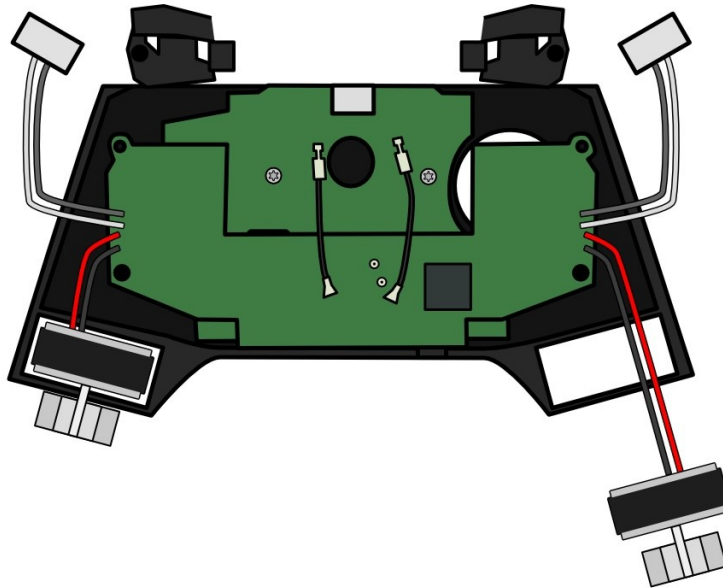


Xbox Series Controller Disassembly

32) Flip the controller to its back.

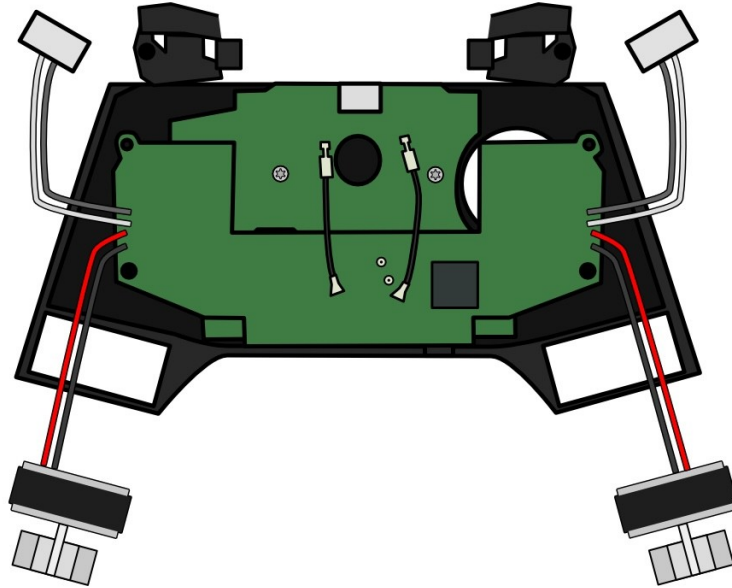


33) Remove the **left rumble motor** from the controller shell.



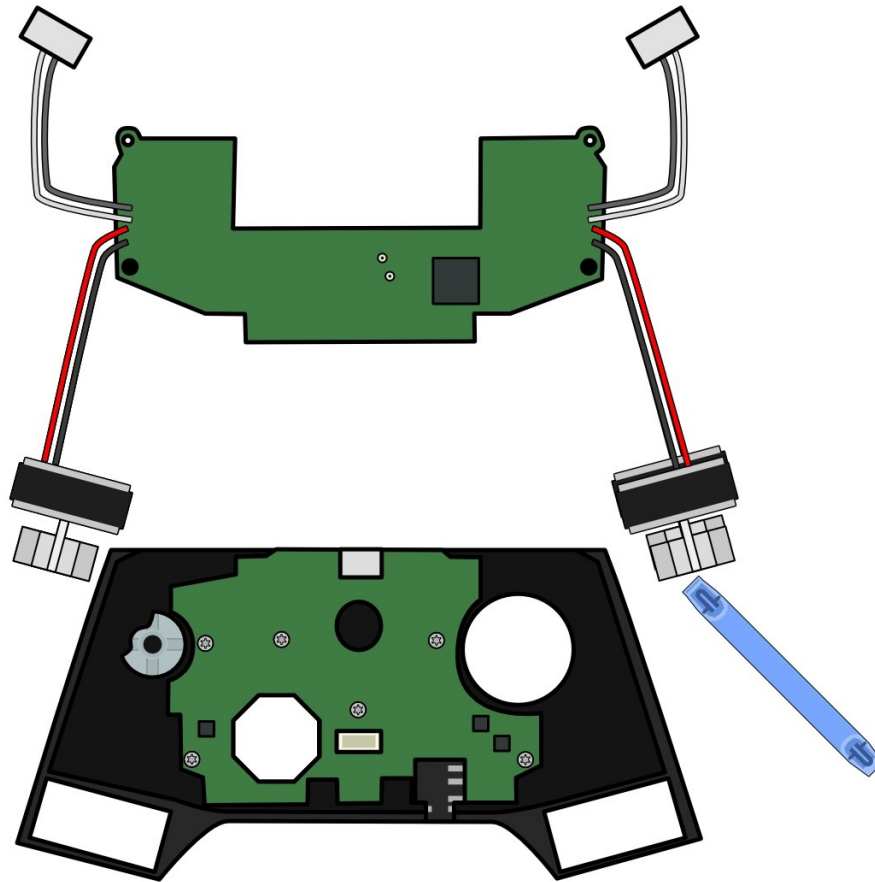
Xbox Series Controller Disassembly

34) Remove the right rumble motor from the controller shell.



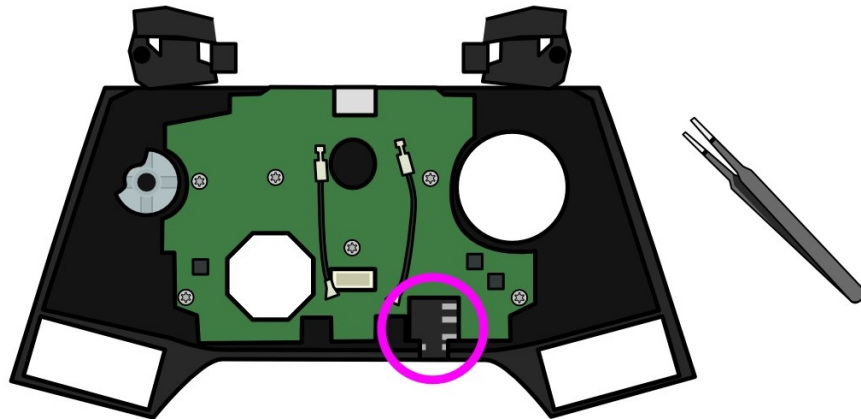
Xbox Series Controller Disassembly

35) With the **spudger**, pry from underneath the **top board** to separate it from the rest of the controller and then remove it.

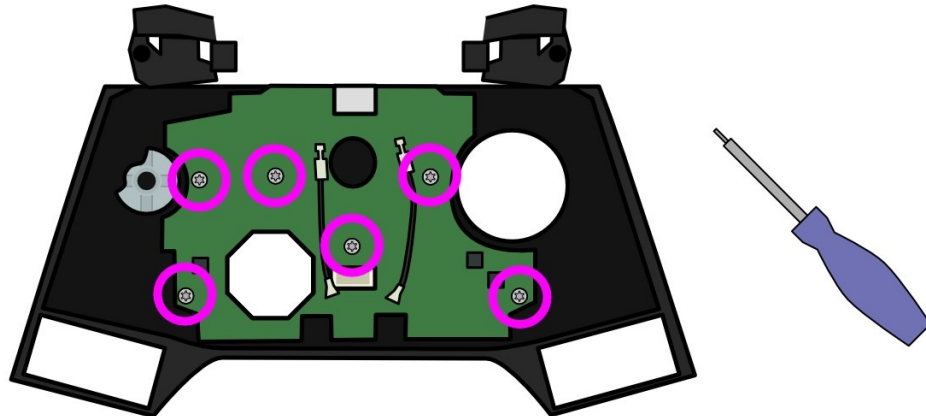


Xbox Series Controller Disassembly

36) With the **tweezers**, remove the 3.5 mm aux port.

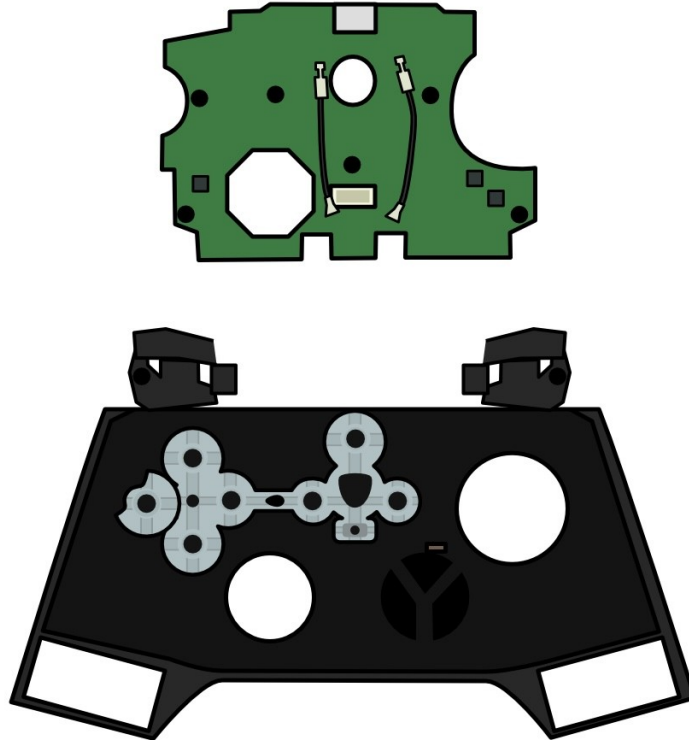


37) With the **Torx T6 screwdriver**, remove the six screws from the **bottom board**.



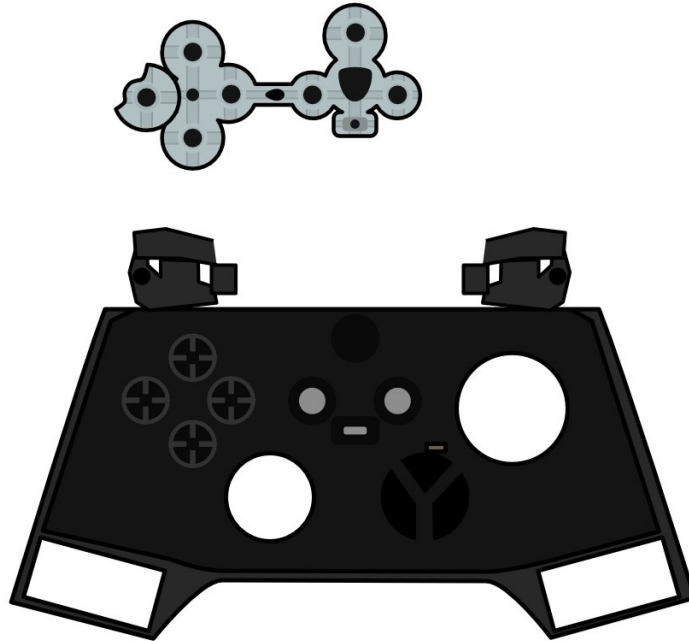
Xbox Series Controller Disassembly

38) Remove the **bottom board**.



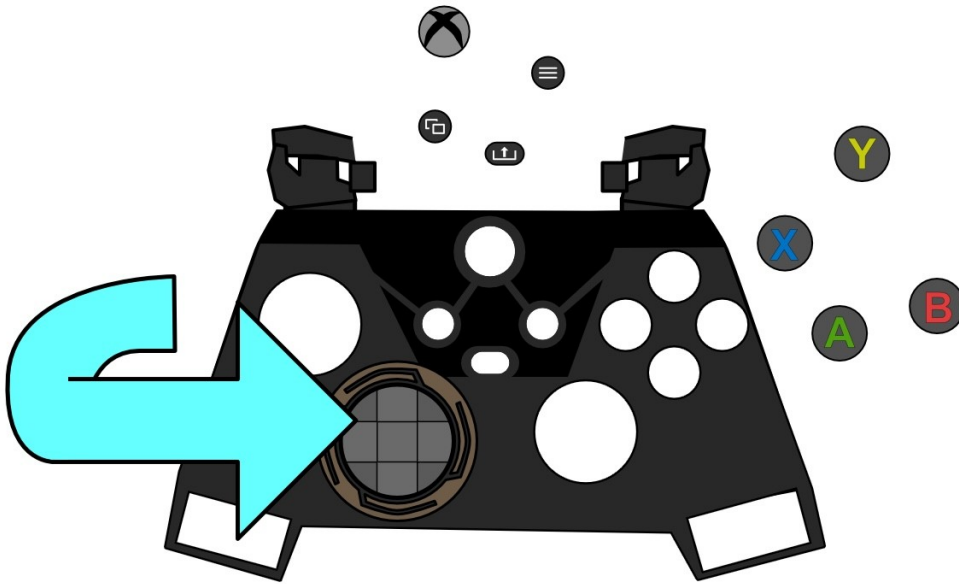
Xbox Series Controller Disassembly

39) Remove the **silicon pad**.

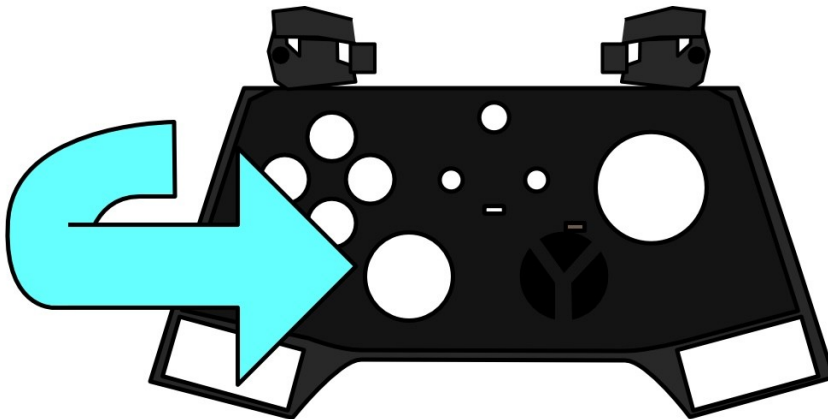


Xbox Series Controller Disassembly

40) Flip the **controller shell** to its front, and the **Menu Buttons** and **Face Buttons** will fall out; remove them.

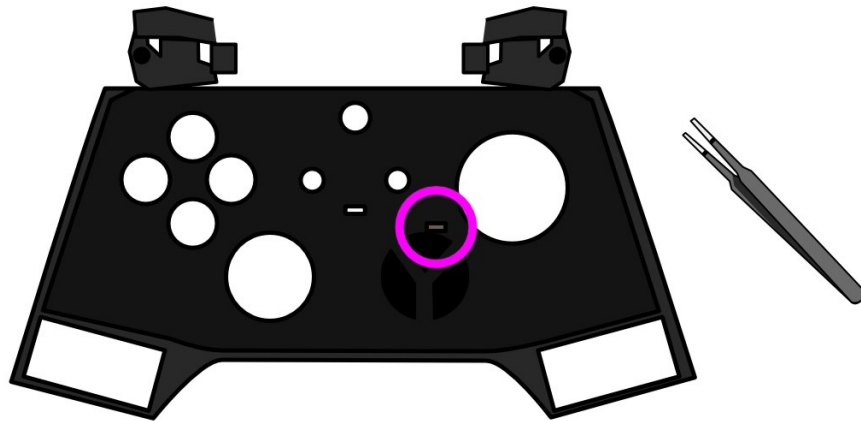


41) Flip the **controller shell** to its back.

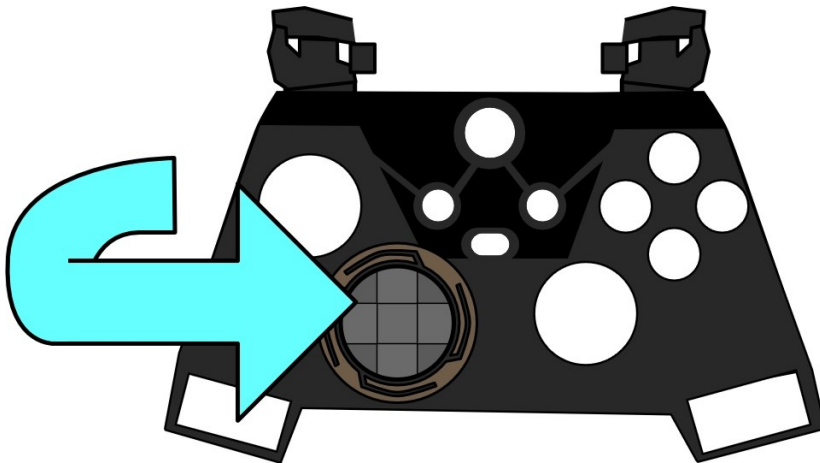


Xbox Series Controller Disassembly

42) Using the **tweezers**, detach the **metal ring** from the **controller shell** by pushing its small clip through the front.

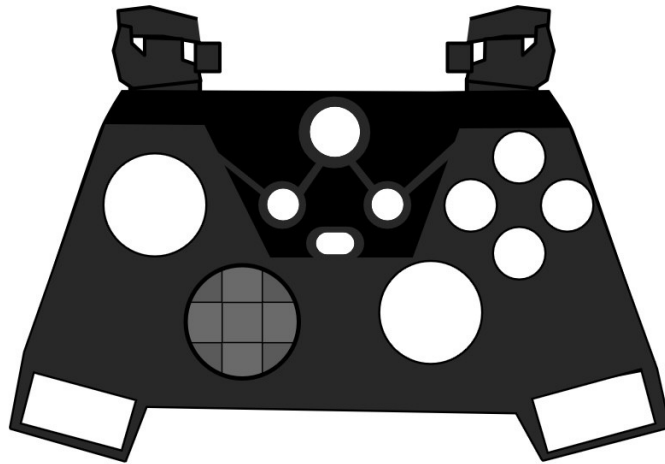


43) Flip the **controller shell** to its front.



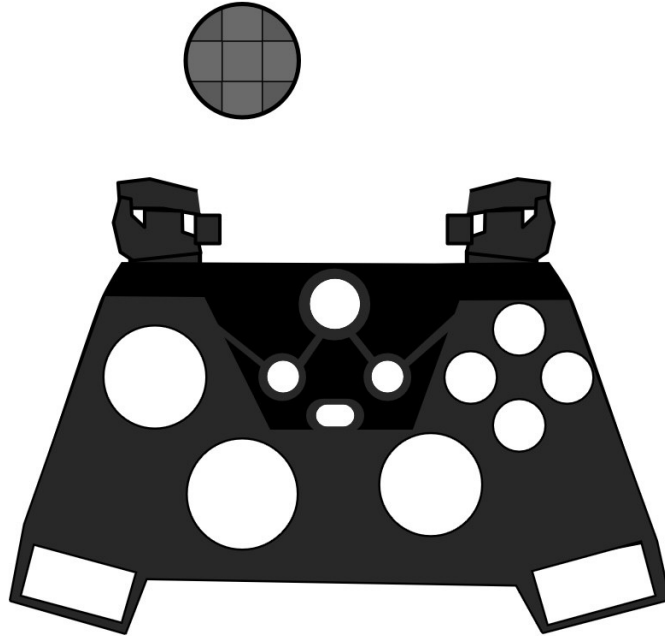
Xbox Series Controller Disassembly

44) Remove the **metal ring**.



Xbox Series Controller Disassembly

45) Remove the **Dpad**.



- You have now successfully disassembled the Xbox Series Controller.
- To reassemble the controller, please follow the steps in the [Standard Operating Procedure for Xbox Series Controller Assembly](#).